

REV	LOCATIONS	DESCRIPTION	DATE	REVISER	APPD
1	△	Update dimensions and tolerances	18/OCT/24	MATT	LEO

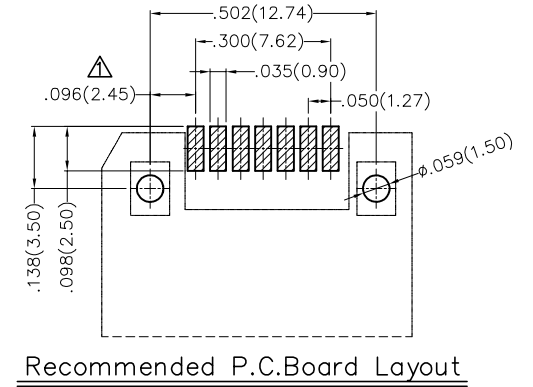
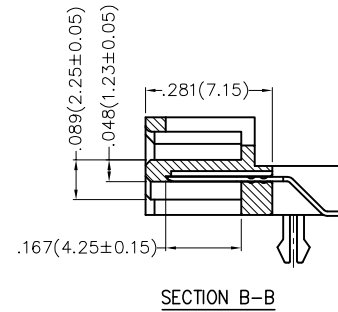
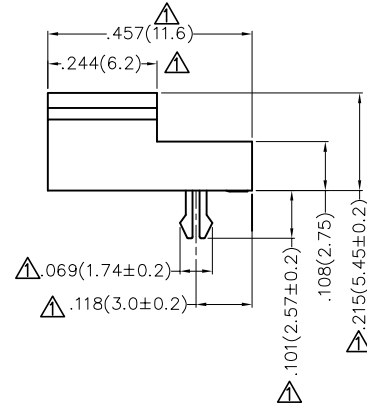
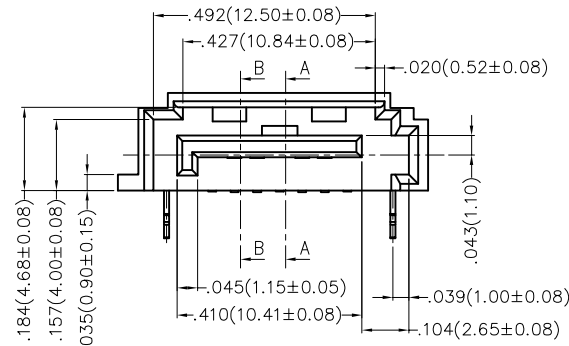
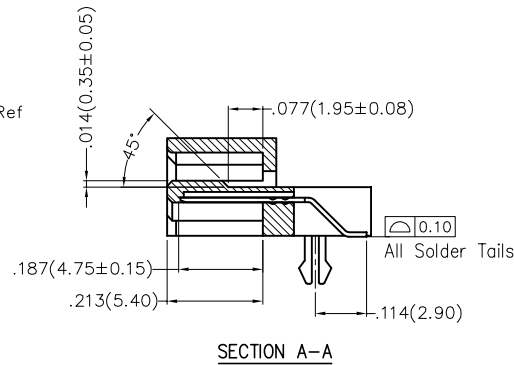
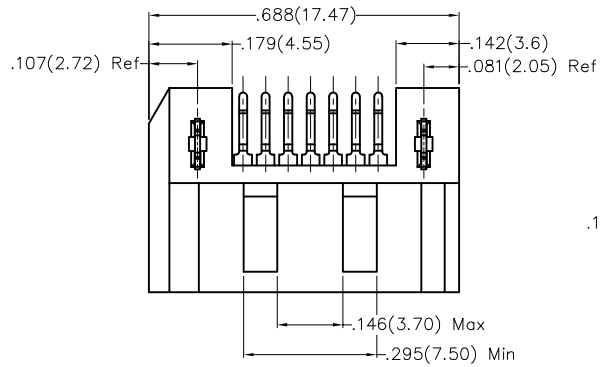
**SPECIFICATIONS**

**Electrical**

Current Rating: 1.0A AC(rms)/DC  
 Contact Resistance: 20 mΩ Max  
 Insulation Resistance: 800 MΩ MIN  
 Withstanding Voltage: 600V AC r.m.s  
 Temperature Range-Operating: -40°C~+85°C

**Material**

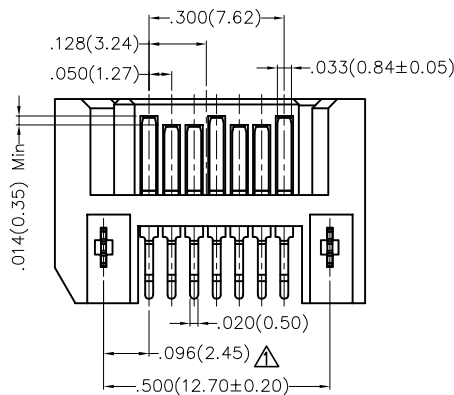
Housing: Thermoplastic UL94V-0, Black  
 Terminal: Copper Alloy, Gold Flash On Contact Area,  
 Bright-Tin Plated On Solder Tails,  
 With Entire Contact Underplated Nickel  
 Board Lock: Copper Alloy, Tin Plated Over Nickel



**Ordering Information**

FST 07 14 — M S B 3 XX 3 K6 K  
 1 2 3 4 5 6 7 8 9 10 11

1	Category FST-SATA	2	Circuits 07-7	3	Distinction No. 14	4	Type M-Male	5	Assembly Layout S-SMT	6	Entry Angle B-90° Angle
7	Plating 3-Half Gold/Tin	8	Thickness of Gold Plating 00-Gold Flash 01-1u" 05-5u" ... Custom Plate Available	9	Material-Resin 3-LCP	10	Color-Resin K6-Black	11	Packaging K-Tray		



THIRD ANGLE PROJECTION	GENERAL TOLERANCES (UNLESS SPECIFIED)		APPROVE BY FRANK	DATE 18/JUN/13	PART NO. FST0714-MSB3XX3K6K	ITEM NO. FST0714	 Building Technology Cornerstone	
	DESIGN UNITS Inch (metric)	X.±.012(0.30)	X.±5'	CHECKED BY CHERRY	DATE 18/JUN/13	TITLE E-SATA 7P MALE SMT		REV 1
SCALE 5:1		SIZE A4	X.XX±.006(0.15)	.XX±1'	DRAWN BY KATE	DATE 18/JUN/13	THIS DRAWING CONTAINS INFORMATION THAT IS PROPRIETARY TO TXGA INDUSTRIAL ELECTRONICS(S.Z)CO.,LTD AND SHOULD NOT BE USED WITHOUT WRITTEN PERMISSION	
		X.XXX±.004(0.10)	.XXX±0.5'					